

11,896 SF TOTAL

(8,521 SF OF OFFICE)



LANDING CENTER, BLDG D

22627 68TH AVE S | KENT, WA

BRIAN BRUININKS, CCIM

(206) 856-6249

bbruininks@andoverco.com

SHANE MAHVI

(858) 442-0441

smahvi@andoverco.com

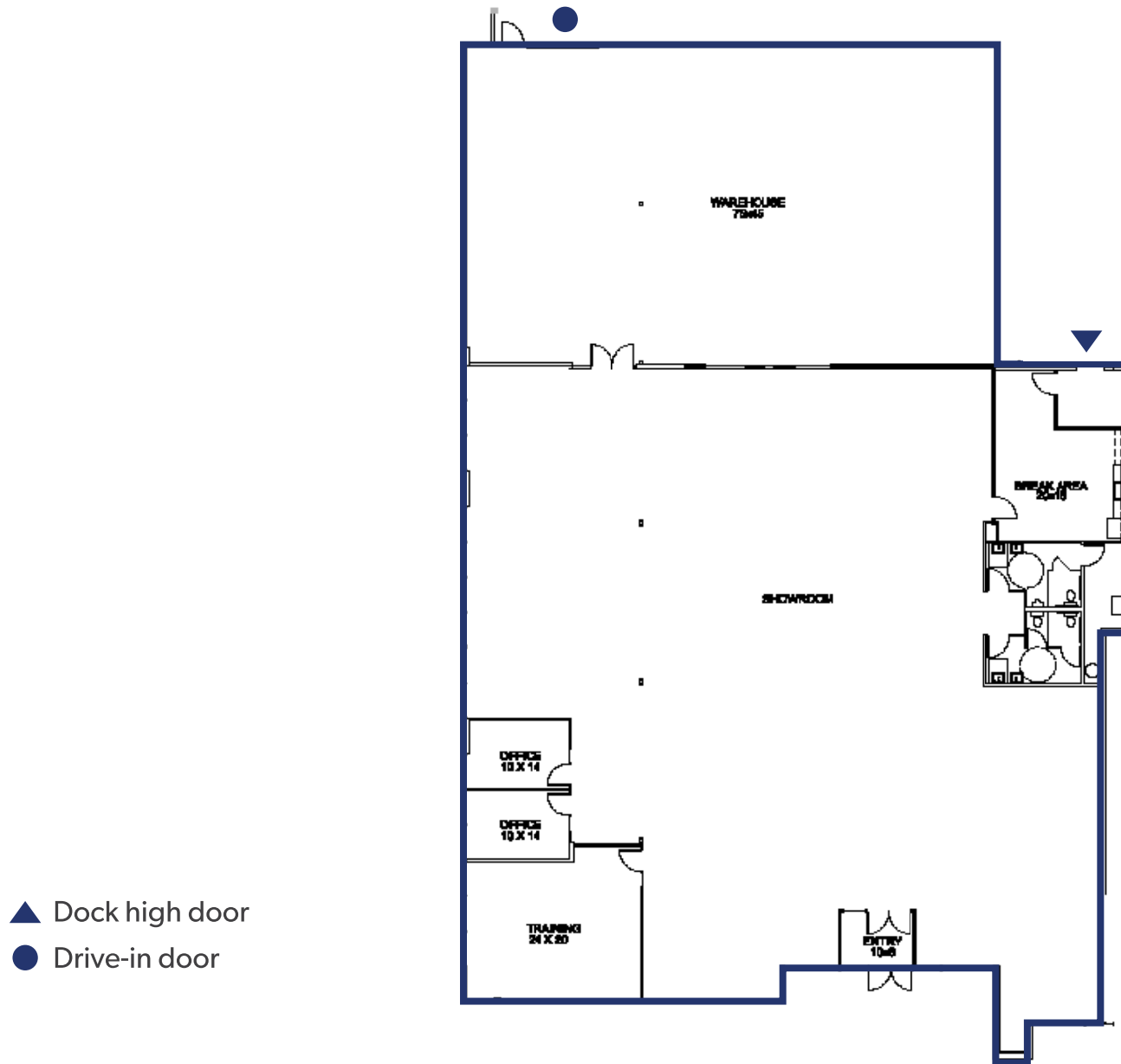


VACANCIES

ALL SPACES AVAILABLE NOW

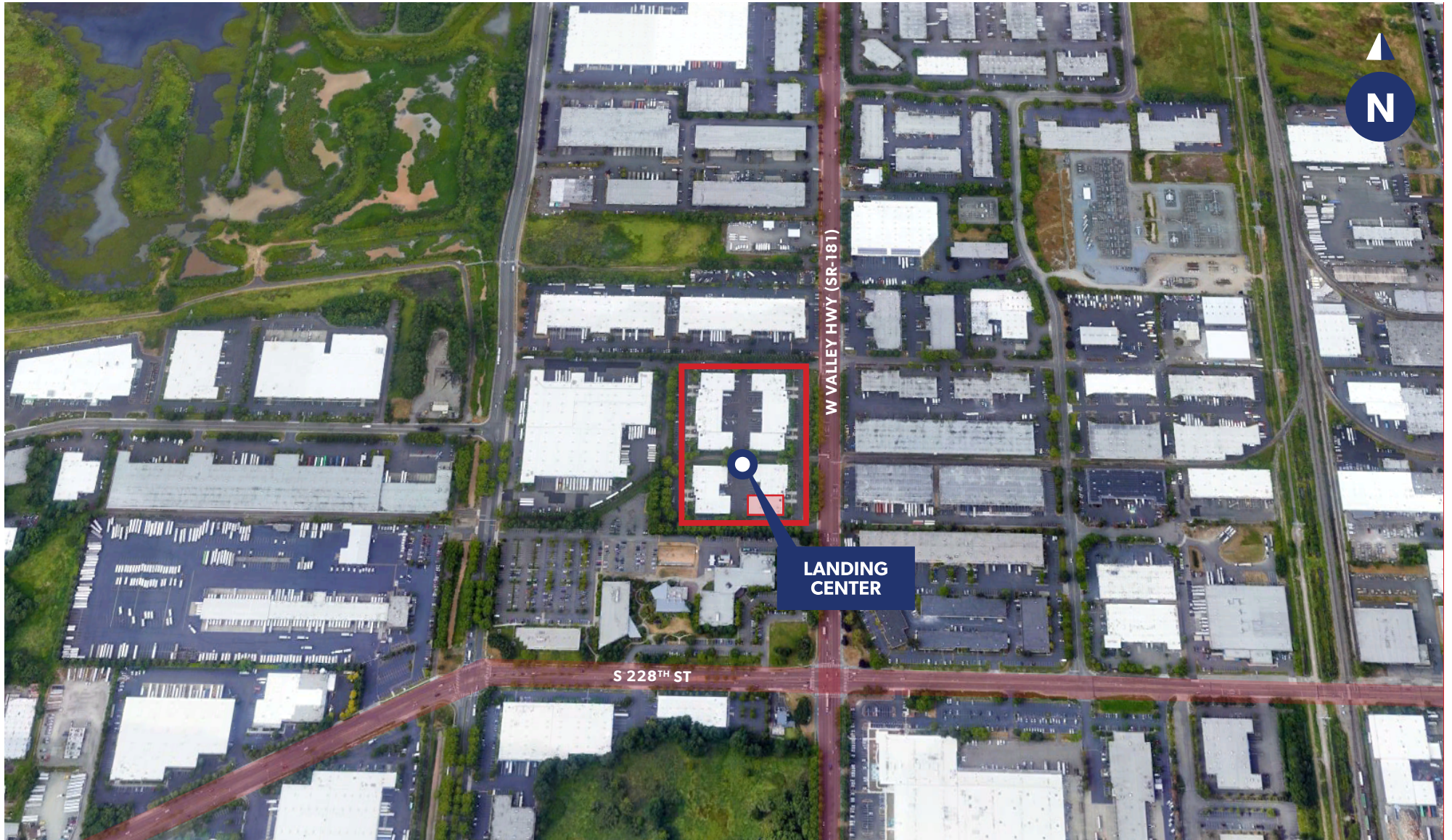
BUILDING	SF AVAILABLE WAREHOUSE OFFICE	DATE AVAILABLE	LOADING CEILING HEIGHT	ASKING RATE (+ NNN'S)	ADDITIONAL INFO
D	11,896 SF 8,521 SF office.	Available May 1st, 2022.	1 DH + 1 GL 18' CH	Call brokers for rates.	Class A south endcap space located on West Valley Highway. This space has great parking, visibility to West Valley Highway. Mostly open space showroom with a few private offices along the glass line. Please call Brokers to arrange tours.

FLOOR PLAN - 1ST FLOOR



The information contained herein has been obtained from reliable sources, but is not guaranteed. A prospective buyer/tenant should verify each item relating to this property and all information contained herein.

LOCATION MAP



BRIAN BRUININKS, CCIM

(206) 856-6249

bbruininks@andoverco.com

SHANE MAHVI

(858) 442-0441

smahvi@andoverco.com



**THE ANDOVER
COMPANY, INC.**

CORFAC INTERNATIONAL