

MRH BUILDING

1103 - 1109 N 36th St | Seattle, WA

FOR LEASE

Multiple Configurations
Industrial/Office
Fenced/Gated



SHANE MAHVI
(206) 336-5338
smahvi@andoverco.com

BRIAN BRUININKS, CCIM
(206) 336-5324
bbruininks@andoverco.com

MRH BUILDING | 1103 - 1109 N 36th St Seattle, WA

ALL SPACES AVAILABLE NOW

SUITE	SF	TYPE	APPROX. CLEAR HEIGHT	LOADING	BASE RENT	AVAILABLE NOW
Garage D	571 SF	Industrial	13'	1 Grade Level	Call brokers for rates	Now
Warehouse D	1,816	Industrial	14'	1 Grade Level	Call brokers for rates	Now
B Low	3,185	Industrial	8'	1 Grade Level	Call brokers for rates	6/1/24 (or potentially sooner)
B High	3,431	Industrial	11'	1 Grade Level	Call brokers for rates	6/1/24 (or potentially sooner)
C	3,924	Industrial	11' - 15'	1 Grade Level	Call brokers for rates	6/1/24 (or potentially sooner)
Woodland Suite	4,896	Industrial	9'	1 Grade Level	Call brokers for rates	6/1/24 (or potentially sooner)
Office D	2,530	Office	Typical	-	Call brokers for rates	Now

The information contained herein has been obtained from reliable sources, but is not guaranteed. A prospective buyer/tenant should verify each item relating to this property and all information contained herein.

ALL SPACES CAN POTENTIALLY BE COMBINED OR LEASED SEPARATELY



MRH BUILDING

1103 - 1109 N 36th St
Seattle, WA



- ▲ Grade level door
- △ Potential to add loading door

The information contained herein has been obtained from reliable sources, but is not guaranteed. A prospective buyer/tenant should verify each item relating to this property and all information contained herein.

ALL SPACES CAN POTENTIALLY BE COMBINED OR LEASED SEPARATELY

MRH BUILDING

1103 - 1109 N 36th St
Seattle, WA

2,530 SF

Office space: 2,530 SF

Renovated office area

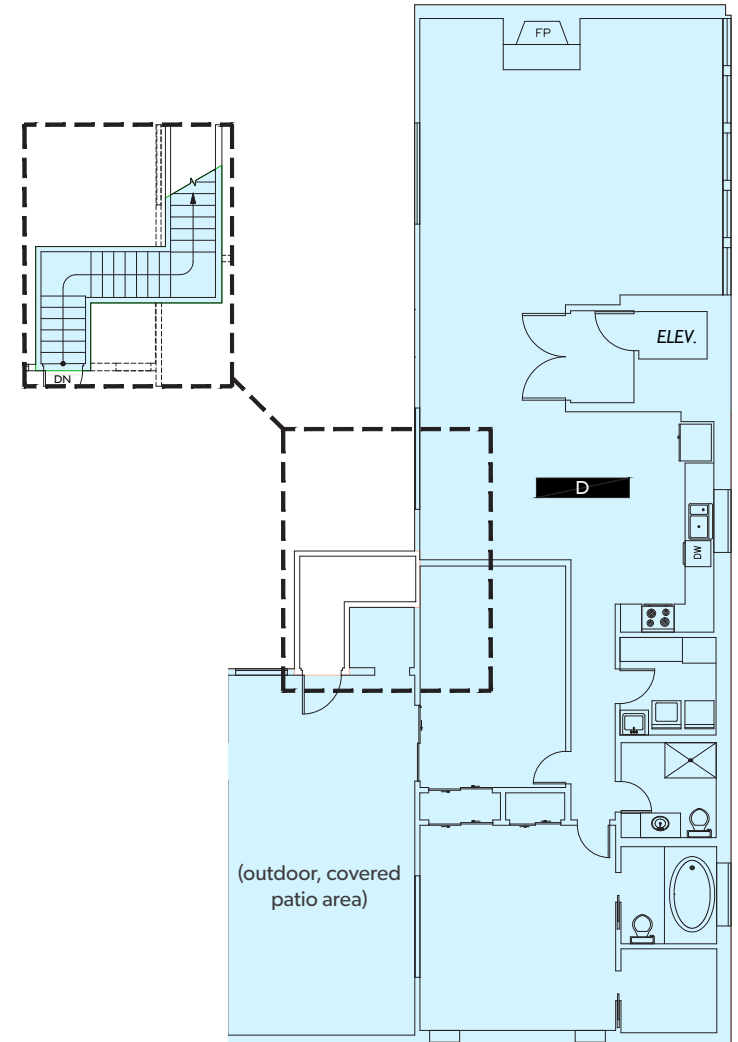
Large windows, lots of natural light

Unit includes full kitchen, shower, laundry, storage,
and restrooms

Outdoor, covered patio area

Elevator and stair access

Available now

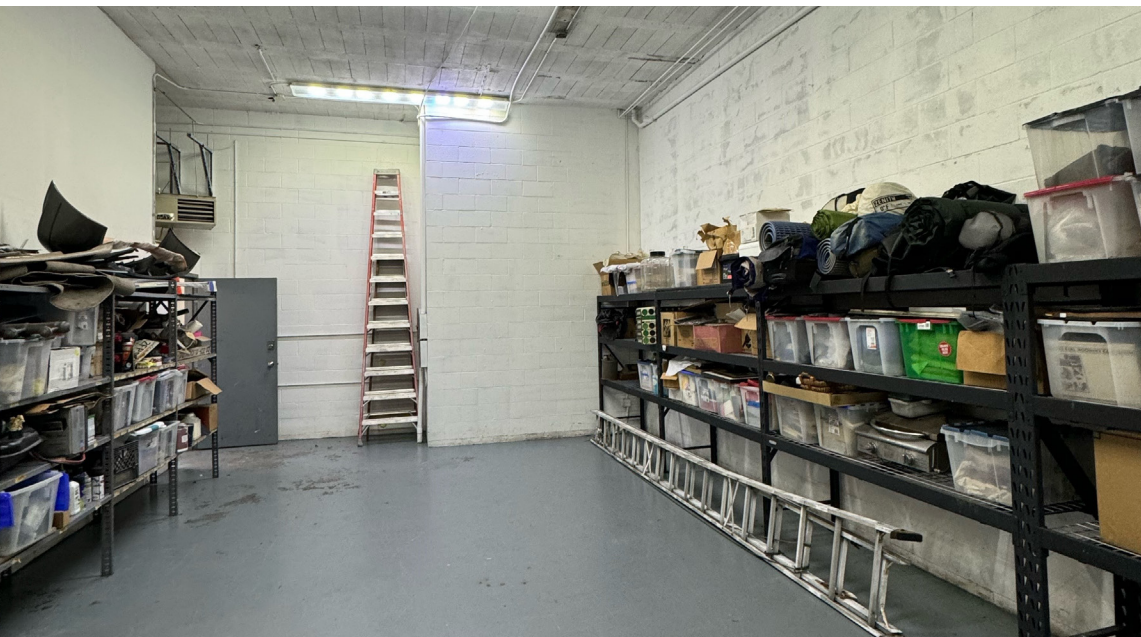


SHANE MAHVI
(206) 336-5338
smahvi@andoverco.com

BRIAN BRUININKS, CCIM
(206) 336-5324
bbruininks@andoverco.com

The information contained herein has been obtained from reliable sources, but is not guaranteed. A prospective buyer/tenant should verify each item relating to this property and all information contained herein.

**THE ANDOVER
COMPANY, INC.**
CORFAC INTERNATIONAL



SHANE MAHVI
(206) 336-5338
smahvi@andoverco.com

BRIAN BRUININKS, CCIM
(206) 336-5324
bbruininks@andoverco.com

The information contained herein has been obtained from reliable sources, but is not guaranteed. A prospective buyer/tenant should verify each item relating to this property and all information contained herein.

 **THE ANDOVER
COMPANY, INC.**
CORFAC INTERNATIONAL

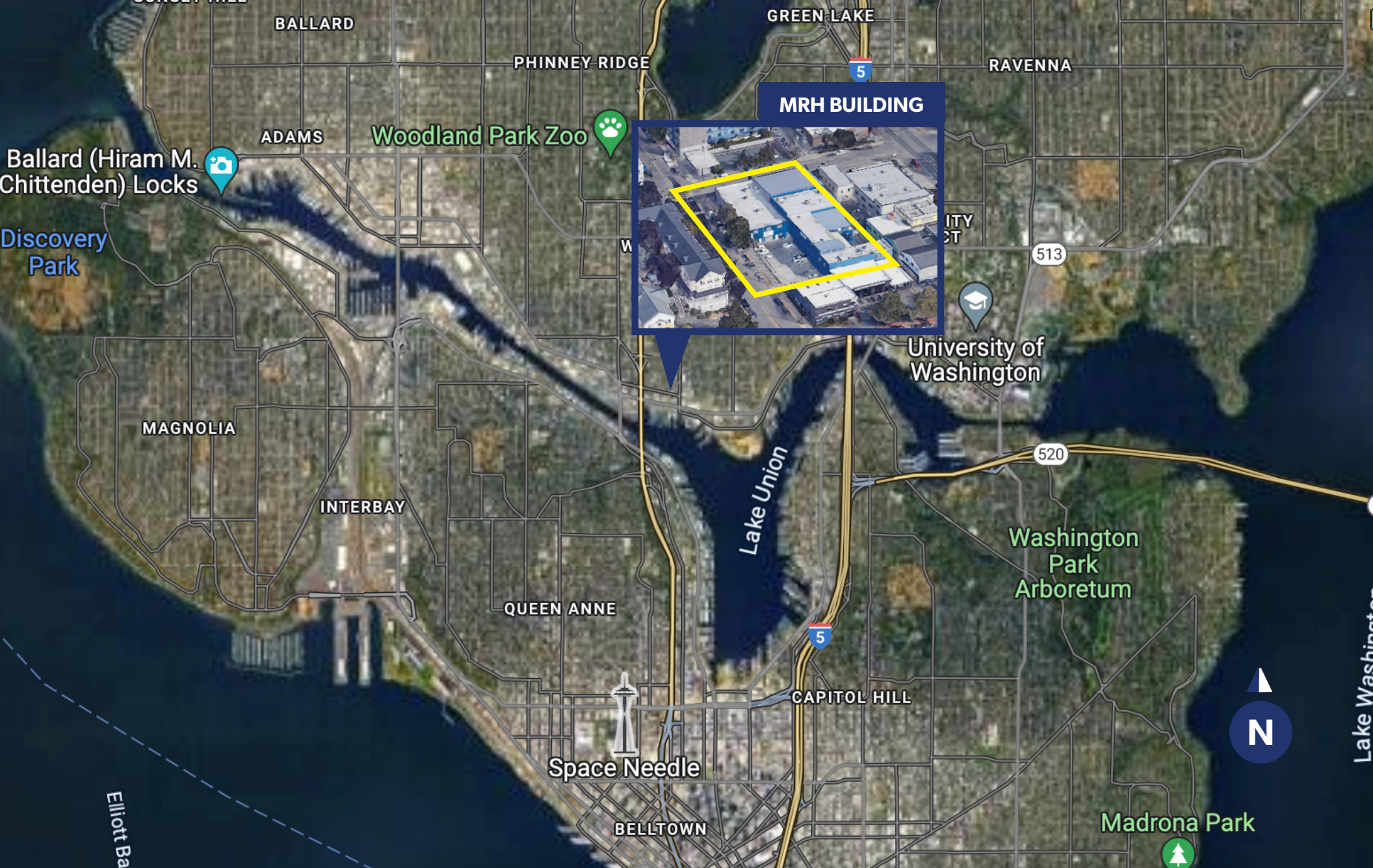


SHANE MAHVI
(206) 336-5338
smahvi@andoverco.com

BRIAN BRUININKS, CCIM
(206) 336-5324
bbruininks@andoverco.com

The information contained herein has been obtained from reliable sources, but is not guaranteed. A prospective buyer/tenant should verify each item relating to this property and all information contained herein.

**THE ANDOVER
COMPANY, INC.**
CORFAC INTERNATIONAL



SHANE MAHVI
(206) 336-5338
smahvi@andoverco.com

BRIAN BRUININKS, CCIM
(206) 336-5324
bbruininks@andoverco.com

The information contained herein has been obtained from reliable sources, but is not guaranteed. A prospective buyer/tenant should verify each item relating to this property and all information contained herein.

