

**10,805 SF TOTAL**

(5,288 SF OF OFFICE)



# LANDING CENTER, BLDG A

22407 68<sup>TH</sup> AVE S | KENT, WA

**BRIAN BRUININKS, CCIM**

(206) 856-6249

[bbruininks@andoverco.com](mailto:bbruininks@andoverco.com)

**SHANE MAHVI**

(858) 442-0441

[smahvi@andoverco.com](mailto:smahvi@andoverco.com)

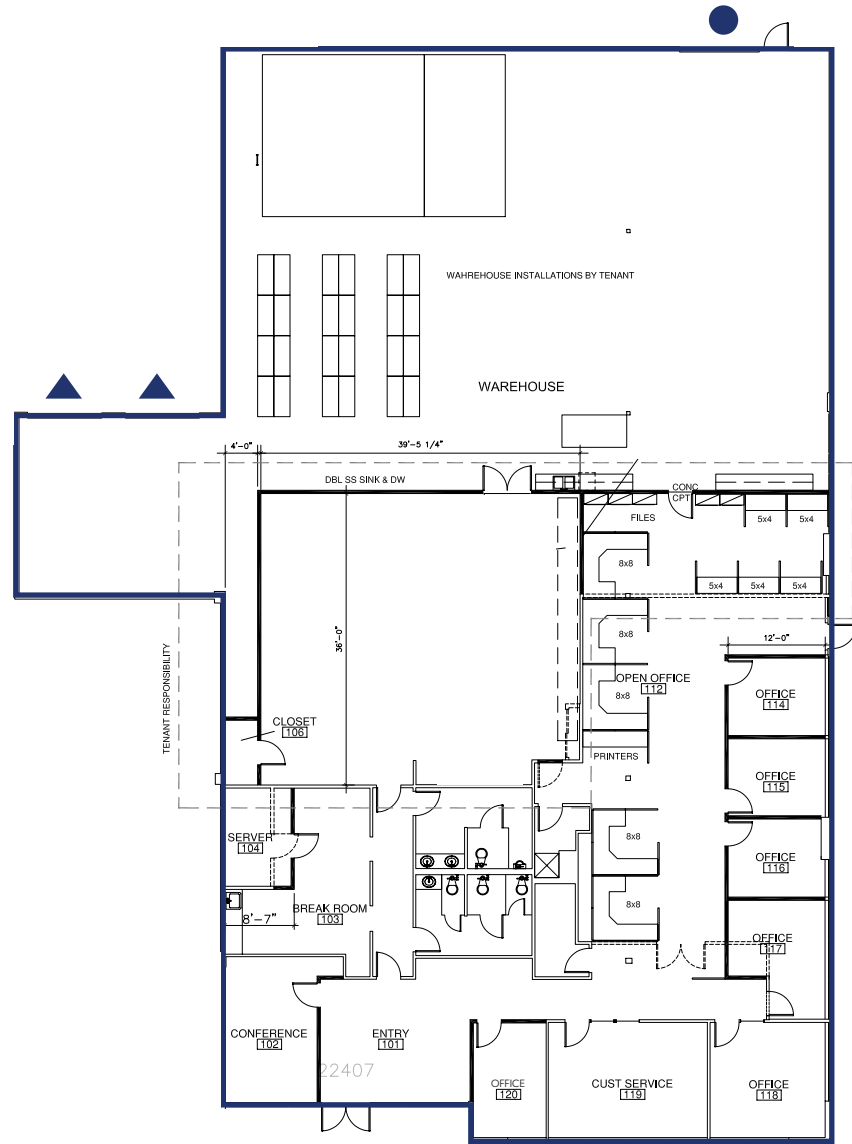


# VACANCIES

## ALL SPACES AVAILABLE NOW

BUILDING	SF AVAILABLE WAREHOUSE OFFICE	DATE AVAILABLE	LOADING CEILING HEIGHT	ASKING RATE (+ NNN'S)	ADDITIONAL INFO
A	10,805 SF 5,288 SF office.	May 1st, 2022. Vacant, possible to occupy sooner.	2 DH + 1 GL 18'- 22' CH	Call brokers for rates.	Class A north endcap space located on West Valley Highway. This space has great parking, visibility to West Valley Highway. A mix of private office and open work space. Currently has a large training room/test kitchen. Please call Brokers to arrange tours.

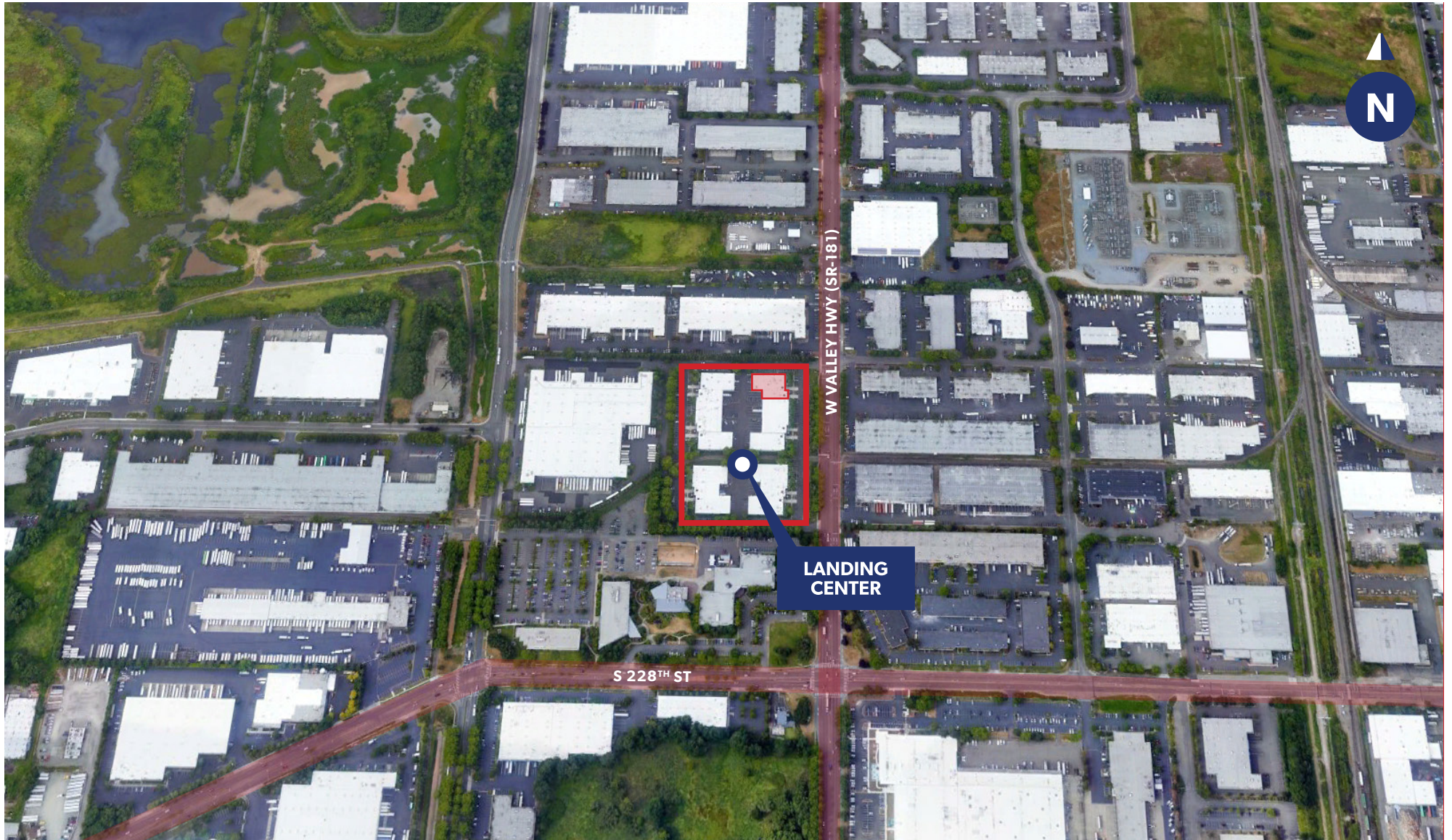
# FLOOR PLAN - 1<sup>ST</sup> FLOOR



- ▲ Dock high door
- Drive-in door

The information contained herein has been obtained from reliable sources, but is not guaranteed. A prospective buyer/tenant should verify each item relating to this property and all information contained herein.

# LOCATION MAP



**BRIAN BRUININKS, CCIM**  
(206) 856-6249  
bbruininks@andoverco.com

**SHANE MAHVI**  
(858) 442-0441  
smahvi@andoverco.com

 **THE ANDOVER  
COMPANY, INC.**  
CORFAC INTERNATIONAL